



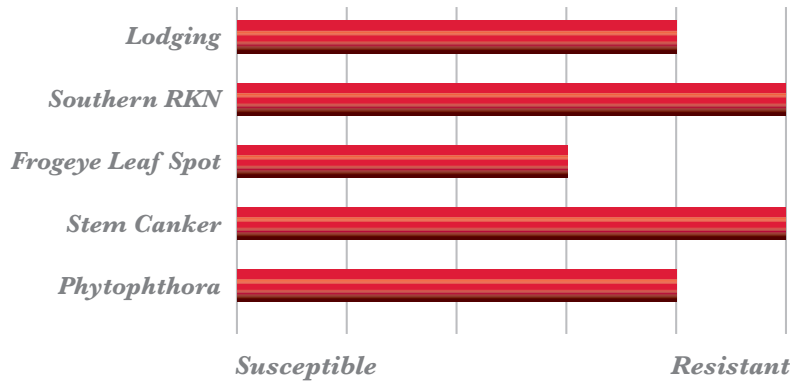
ARMOR

RM: 7.2 / DETERMINATE

# 72-R72



- ★ Excellent Standability, Emergence and Vigor
- ★ STS, Stem Canker and RKN!



— Plant Height —  
**MEDIUM**

— Positioning —  
**MEDIUM SIZED  
FOR ALL SOILS**

TRAIT PACKAGES: Roundup Ready 2 Yield®

STS

ARMOR  
**72-R72**

Trait	Value
<b>CHARACTERISTICS</b>	
RR2Y	RR2Y
Maturity	7.2
Plant Type	Determinate
Plant Height	Medium
Lodging	M. Resistant
Shatter	Resistant
Flower Color	White
Hilum Color	Black
Pubescence	Tawny
Pod Color	Tan
Seed Size	2300-2600
<b>DISEASE RATINGS</b>	
Phytophthora	M. Resistant
Phytophthora Gene	Rps 3a
Sudden Death	Moderate
Frogeye Leaf Spot	Moderate
Stem Canker	Resistant
Cyst Nematode	MR3
Southern RKN	Resistant
Brown Stem Rot	—
Iron Chlorosis	—
White Mold	—
<b>RESPONSE RATINGS</b>	
Chloride Tolerance	Includer

**Soybean Rating System:** There are many ways to evaluate diseases, agronomic characteristics, etc. Since many of these ratings are subjective, an explanation is listed here: **Resistant** implies no or very slight disease presence when conditions are favorable for development. **Moderately Resistant (M. Resistant)** implies slight disease presence when conditions are favorable for development. **Moderate** implies some disease presence when conditions are favorable for development. **Moderately Susceptible (M. Susceptible)** implies significant disease presence when conditions are favorable for development. **Susceptible** implies very significant disease presence when conditions are favorable for development.

These are general recommendations based on data taken from breeder, university, company trials and producer field observations and do not constitute a warranty of fitness or guarantee of performance for a particular use. • Double cropping Maturity Group IVs can be extremely risky without adequate irrigation and proper variety selection. • **Upright** implies a narrow canopy with very little branching. Intermediate implies a wider canopy with some branching. **Bushy** implies a wide canopy. **Imp. Black** = Imperfect Black. **NG** = No Gene. **—** = Not Available. **RR2X** = Roundup Ready 2 Xtend®. **RR2Y** = Roundup Ready 2 Yield®. **LL** = LibertyLink®. **GT** = Glyphosate Tolerant. **CONV** = Conventional.

Unauthorized propagation, seed multiplication, and/or sale, offering for sale, exchange, delivery, transfer, import, or export of seed of this variety is prohibited. Violators of the U.S. Plant Variety Protection ACT (PVPA) will be subject to proceedings under federal and state law and may be liable for money damages. Seed of varieties protected or applied for under 1994 amendments to the PVPA cannot be sold for reproductive purposes without permission from the owner of this variety.

Ratings are general. Soil and environment may adversely affect performance.



PROUD MEMBER OF U.S. AGRICULTURE

**ArmorSeed.com**

Thanks for trusting Armor on your farm.